

What's the point of codes of conduct?

Joe Roberts

Lead Specialist Advisor: Recreation and Access
Natural Resources Wales



What's the point of codes of conduct?

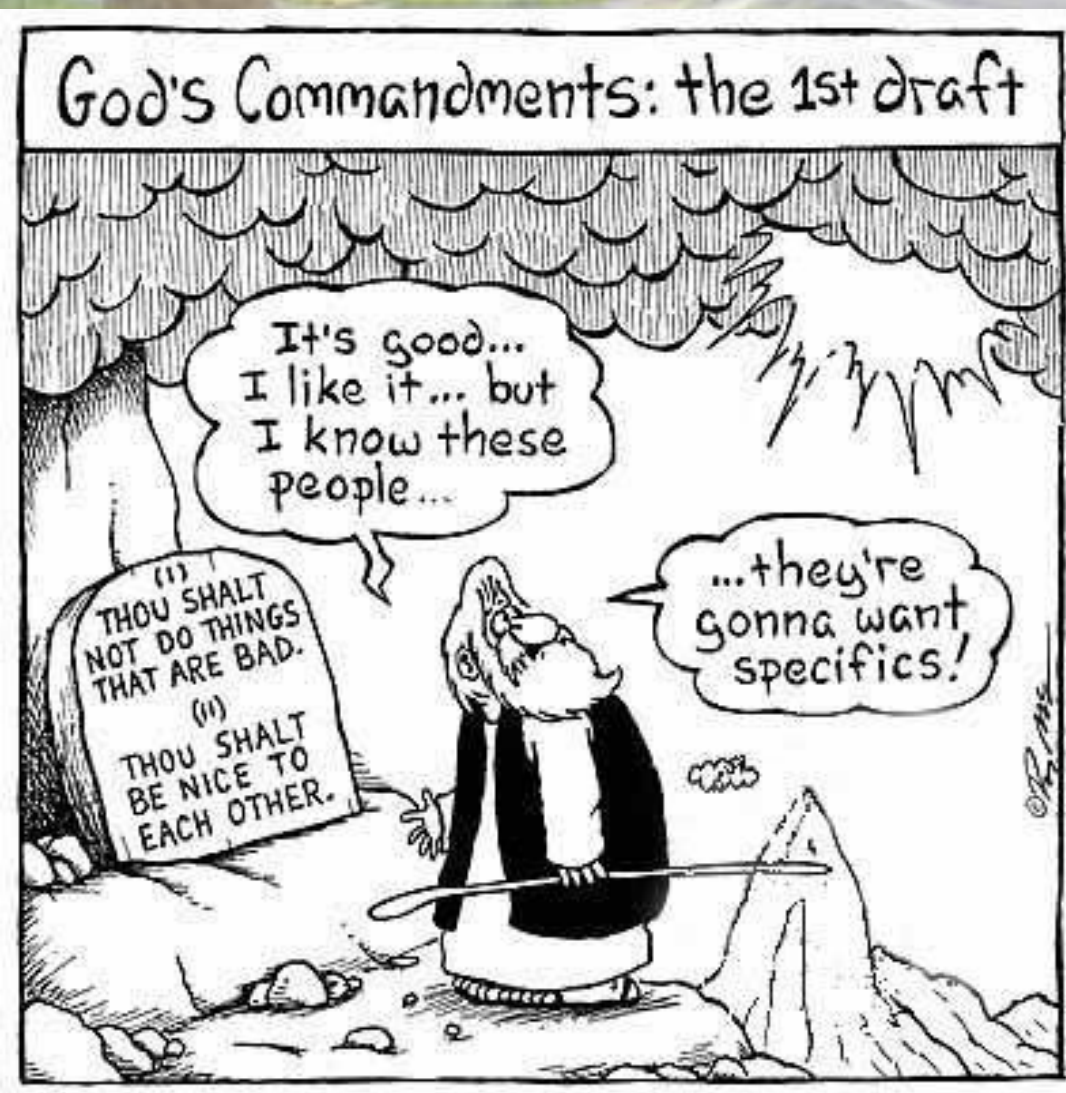
Are codes of conduct effective at changing people's behaviour??

There are so many out there, it's just too confusing for the average visitor.

Does anyone even read them?

They're just a cheap pretence at trying to manage recreation, why do we even bother writing them?

Codes as a tool for recreation management



- Large number of codes, although many are not promoted effectively
- Large amount of overlap; however, no evidence of codes conflicting with each other
- Most general codes are oversimplified and fail to provide sufficient guidance
- Conversely, some codes are over-complex and too wordy
- The lack of evaluation on the effectiveness of codes as countryside and visitor management

National Codes



Llywodraeth Cymru
Welsh Government

Countryside and Rights of Way Act 2000: Chapter 1:

“In relation to Wales, it shall be the duty of Natural Resources Wales to issue, and from time to time revise, a code of conduct for the guidance of persons exercising the right conferred by section 2(1) and of persons interested in access land...”



Land Reform (Scotland) Act 2003: Chapter 10:

- 1. Scottish Natural Heritage (SNH) and local authorities to publicise the Access Code*
- 2. SNH to promote understanding of it*



National Codes

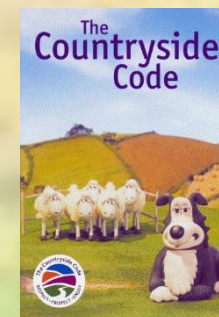


Llywodraeth Cymru
Welsh Government

£500K £150k £150k £150k £75k £75k £15k £15k £15k

Awareness of the Countryside Code

| 2005 | 2006 | 2007 | 2008 | 2009 | 2010 | 2011 | 2012 | 2013 |
|------|---------|------|------|---------|---------|---------|---------|---------|
| 70% | no data | 76% | 74% | no data | no data | no data | no data | no data |



Awareness of the Scottish Outdoor Access Code

| 2005 | 2006 | 2007 | 2008 | 2009 | 2010 | 2011 | 2012 | 2013 |
|------|------|------|------|------|------|------|------|------|
| 43% | 58% | 62% | 62% | 56% | 55% | 47% | 40% | 44% |

£500K £500K £500K £500K

SNH In house



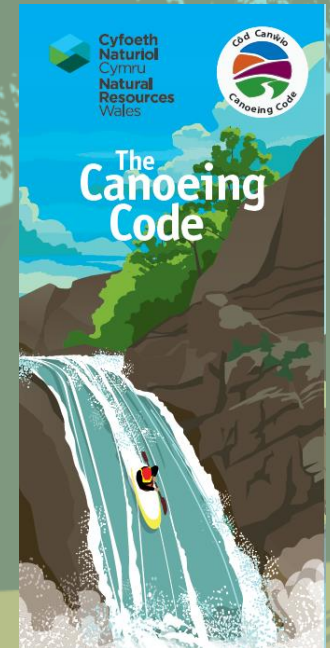
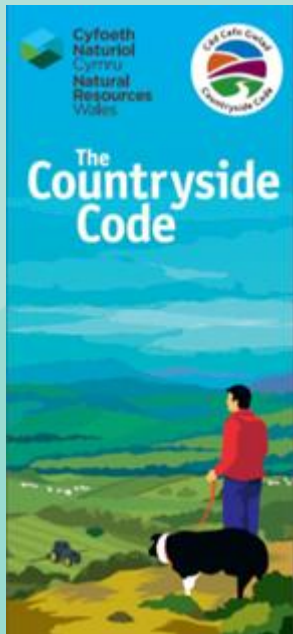


**Cyfoeth
Naturiol**
Cymru
**Natural
Resources**
Wales

The Countryside Codes



Llywodraeth Cymru
Welsh Government



Dog Walking



- Concordat between NRW, FC (England) and the Kennel Club
- Development of the Dog Walking Code for England and Wales
- The code was developed with input from: Natural England, Natural Resources Wales, Kennel Club, Forestry Commission, National Farmers' Union, NFU Cymru, Ramblers, Ramblers Cymru, National Trust, Country Land and Business Association, Hampshire County Council, The British Horse Society and the British Mountaineering Council.

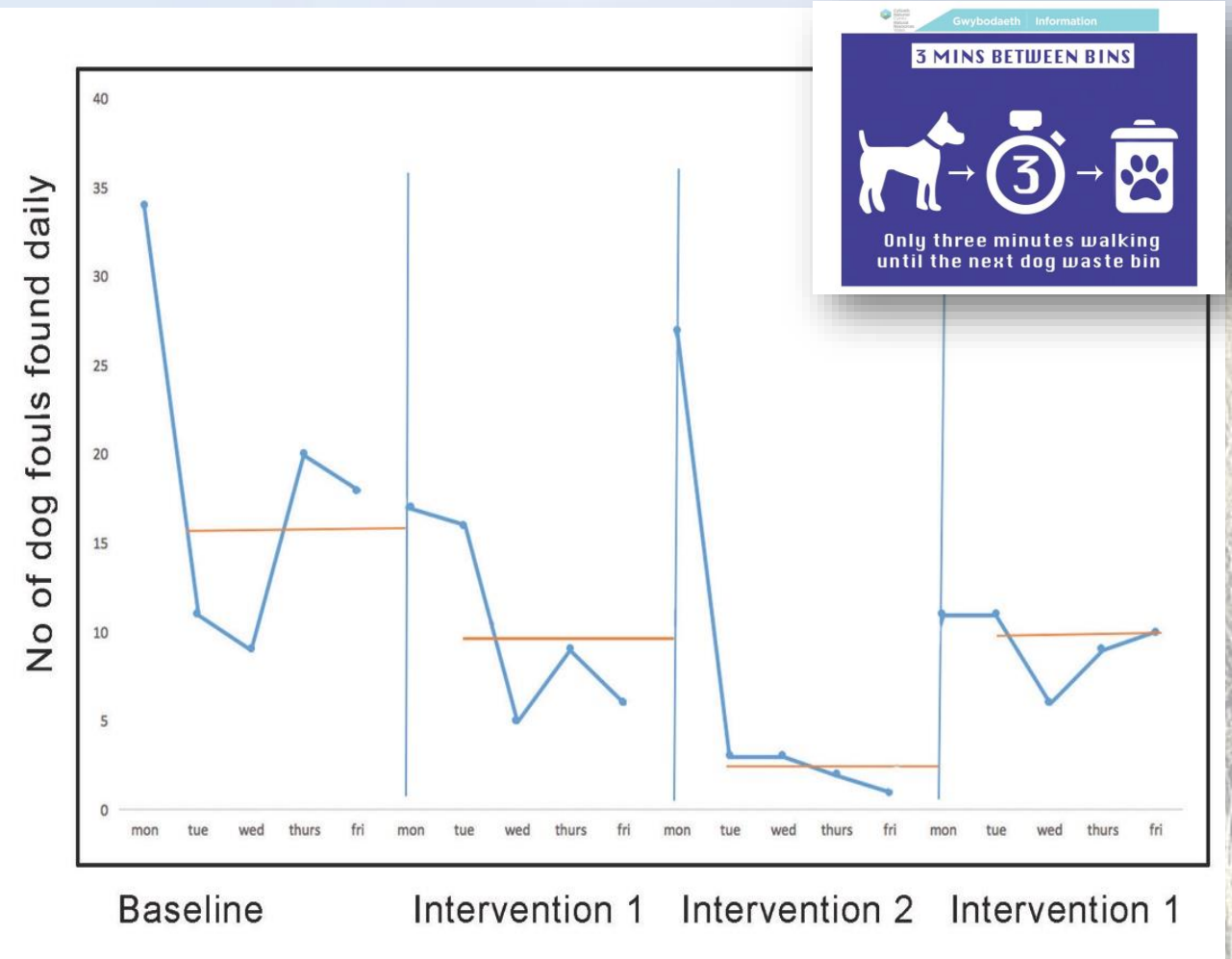


Dog Walking



Llywodraeth Cymru
Welsh Government

- Project exploring the use of behaviour design (nudge) to manage a problem site for dog fouling.
- The study used an ABAB methodology – Alternating between two interventions.
- Intervention 2 used ‘3 mins to a bin’ signage placed at key sites and travel line as communication points.
- 85% reduction in dog fouling between the baseline and intervention 2



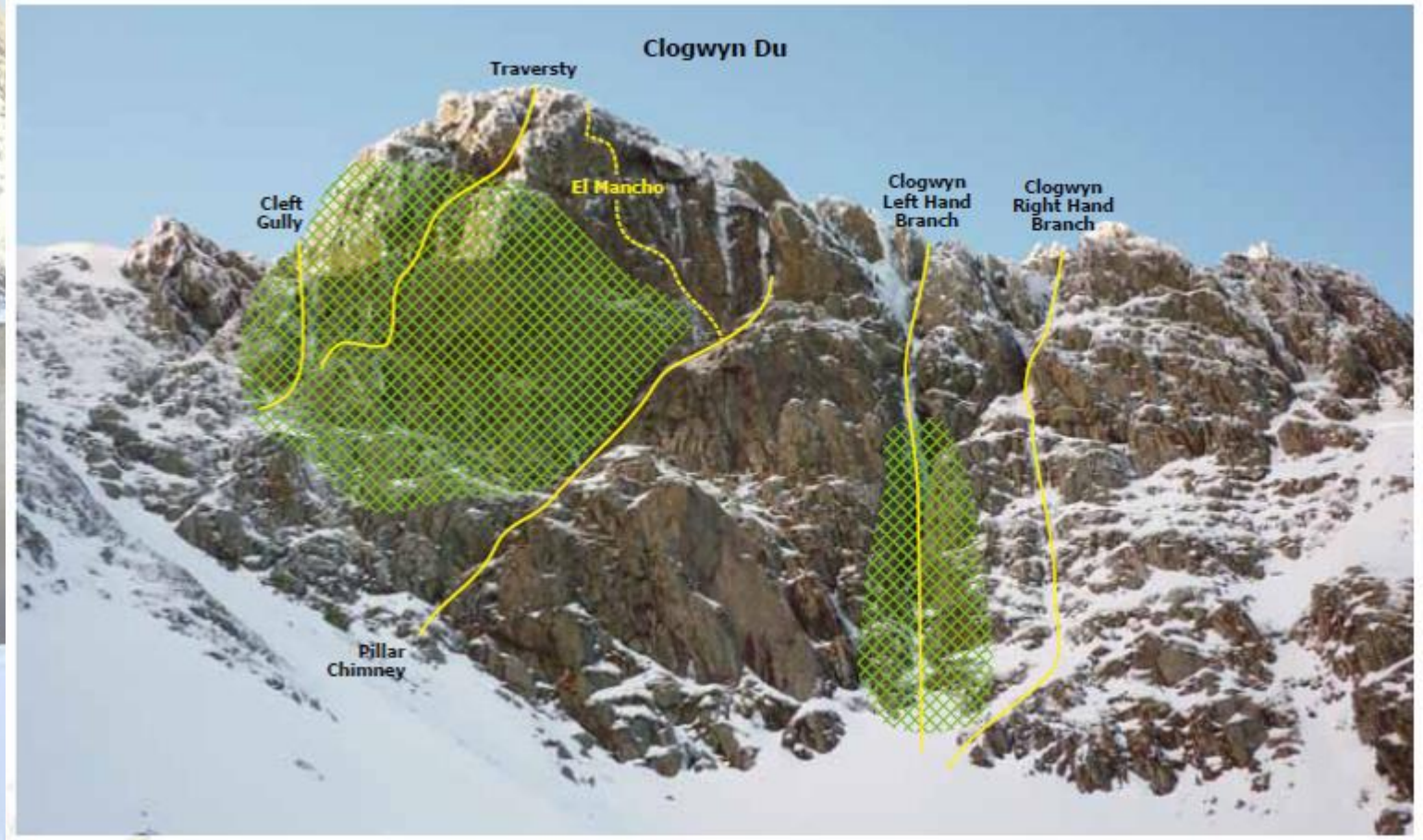


Cyfoeth
Naturiol
Cymru
Natural
Resources
Wales



Llywodraeth Cymru
Welsh Government

Winter Climbing



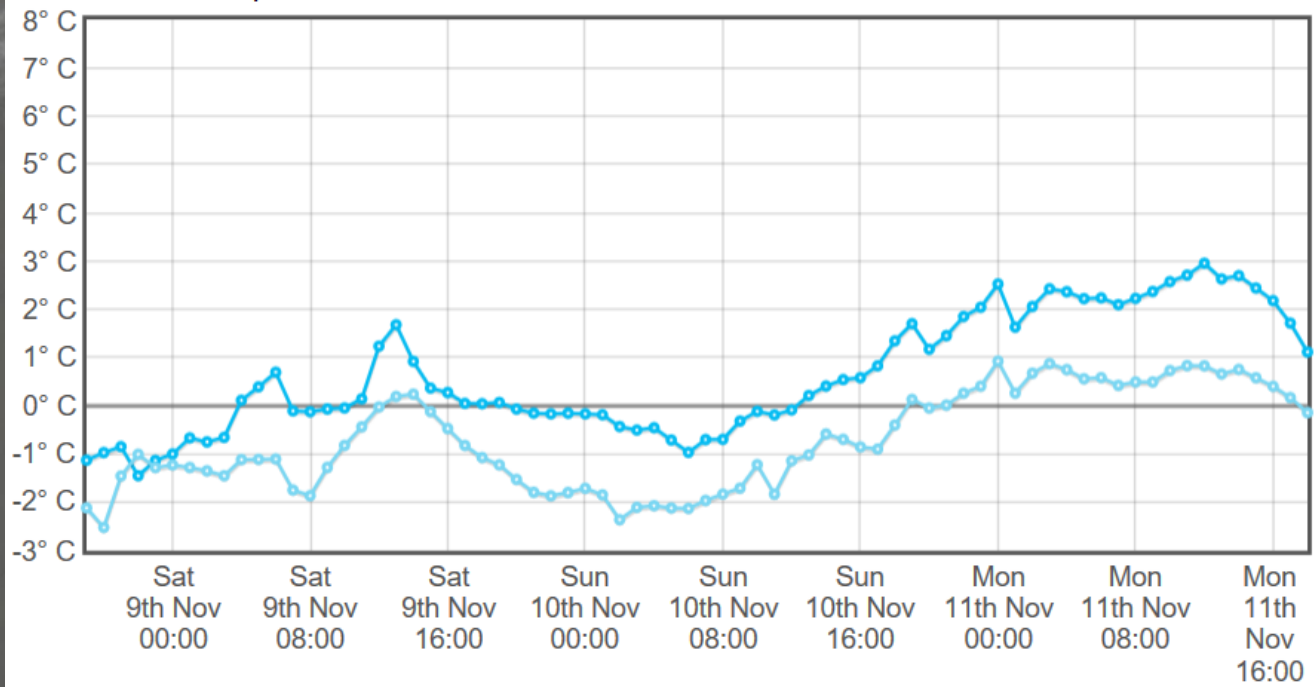


Winter Climbing



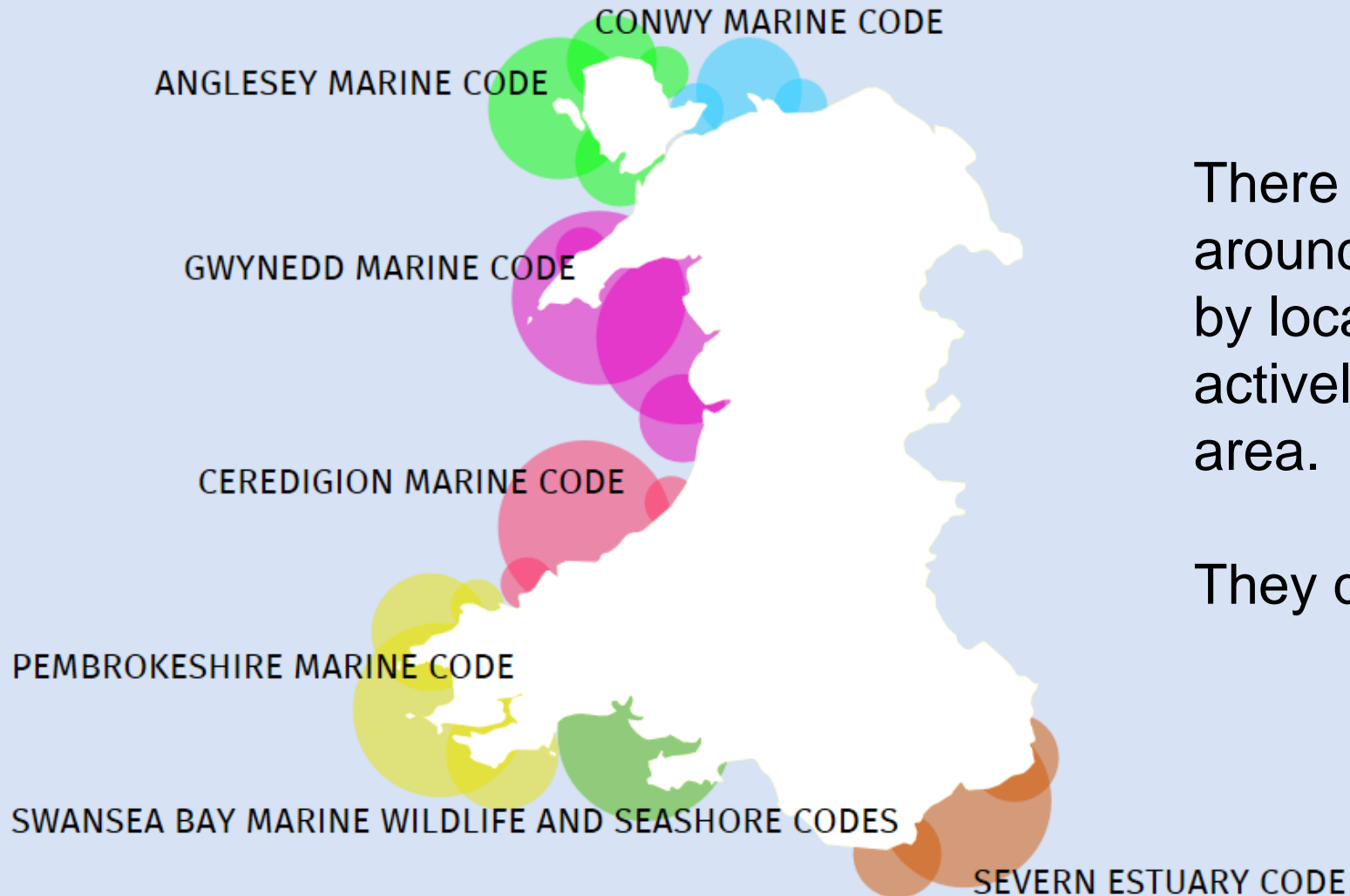
Cwm Idwal. Temperature Data

Air @ 600m Air @ 850m





Marine Recreation



There are 7 Marine Codes around Wales, all are managed by local group or authority that actively promote them in their area.

They don't all match...



**Cyfoeth
Naturiol**
Cymru
**Natural
Resources**
Wales

Marine Recreation



Llywodraeth Cymru
Welsh Government



WILD SEAS
Wales
Discover · Enjoy · Respect



**Cyfoeth
Naturiol
Cymru
Natural
Resources
Wales**

Gorge Walking



Llywodraeth Cymru
Welsh Government

Mae Ceunant Afon Ddu yn le arbennig iawn.

Y ceunant hwn yw un o'r enghreifftiau gorau o "fforestydd glaw tymherus" sydd ar ôl yng Nghymru. Mae mwsoglau, llysiau'r afu, cennau a rhedyn yn tyfu ar y creigiau, coed a chlogwyni yn y ceunant. Mae nifer ohonynt yn brin iawn ac ni welir hwy ond mewn un neu ddau safle yn unig yn y ceunant. Mae rhai rhywogaethau bron rhy fychan i gael eu gweld ac maent i gyd yn hynod fregus i erydiad.

The Afon Ddu gorge is a very special place.

It is one of the best examples of a "temperate rainforest" remaining in Wales. Mosses, liverworts, lichens and ferns grow on the rocks, boulders, trees and cliffs in the gorge. Many are very rare and have only one or two colonies within the gorge. Some species are almost too small to see and all are extremely vulnerable to erosion.

Rheadr Fawr
Large Waterfall

LLED SENSITIF

Celsiwrch eich gorau i osgoi'r llecynnau â llystyfiant yn yr ardaloedd hyn

MODERATE SENSITIVITY

Take extra care to avoid vegetated surfaces in these areas

SENSITIF IAWN

Os oes modd, celsiwrch osgoi'r ardaloedd hyn yn gyfan gwbl

HIGH SENSITIVITY

If possible, please avoid these areas altogether

Allwedd Key

-  Coeden wedi disgyn
Fallen Tree
-  Pwll dwfn
Deep Pool
-  Rheadr
Waterfall
-  Clogfeini bach
Small Boulders
-  Clogfeini mawr
Large Boulders

RYDYCH CHI YMA
YOU ARE HERE

Tra'n y ceunant, a wnewch chi helpu i osgoi niwed i'r planhigion arbennig hyn drwy ddilyn y pwyntiau syml isod:

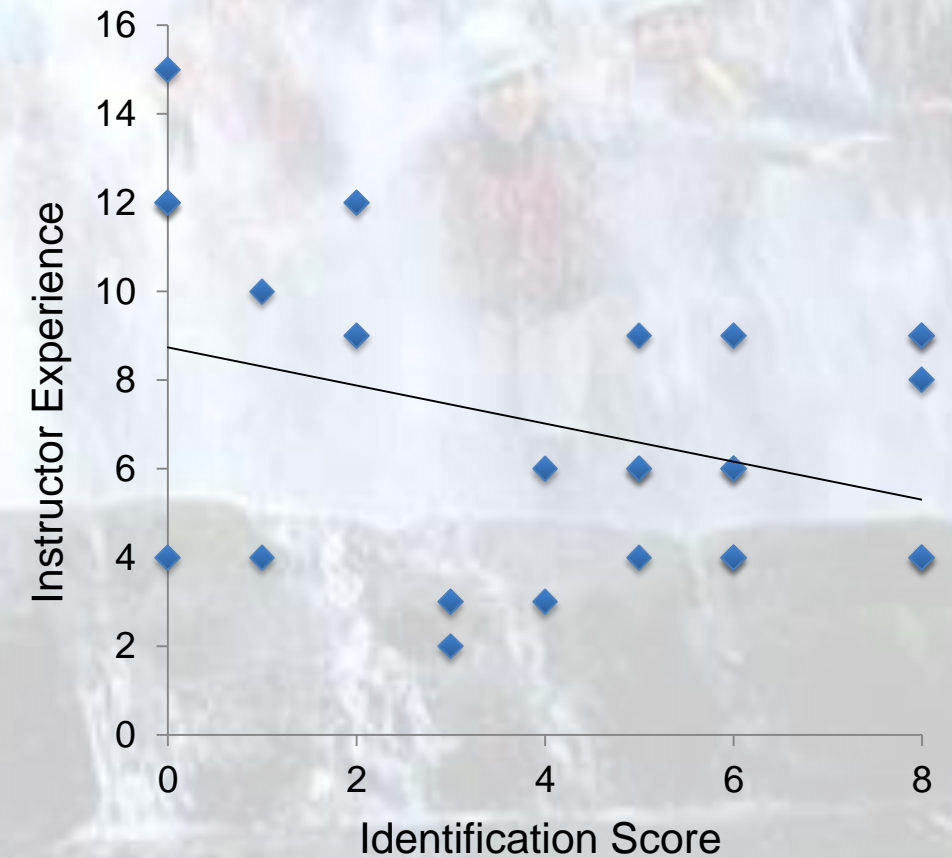
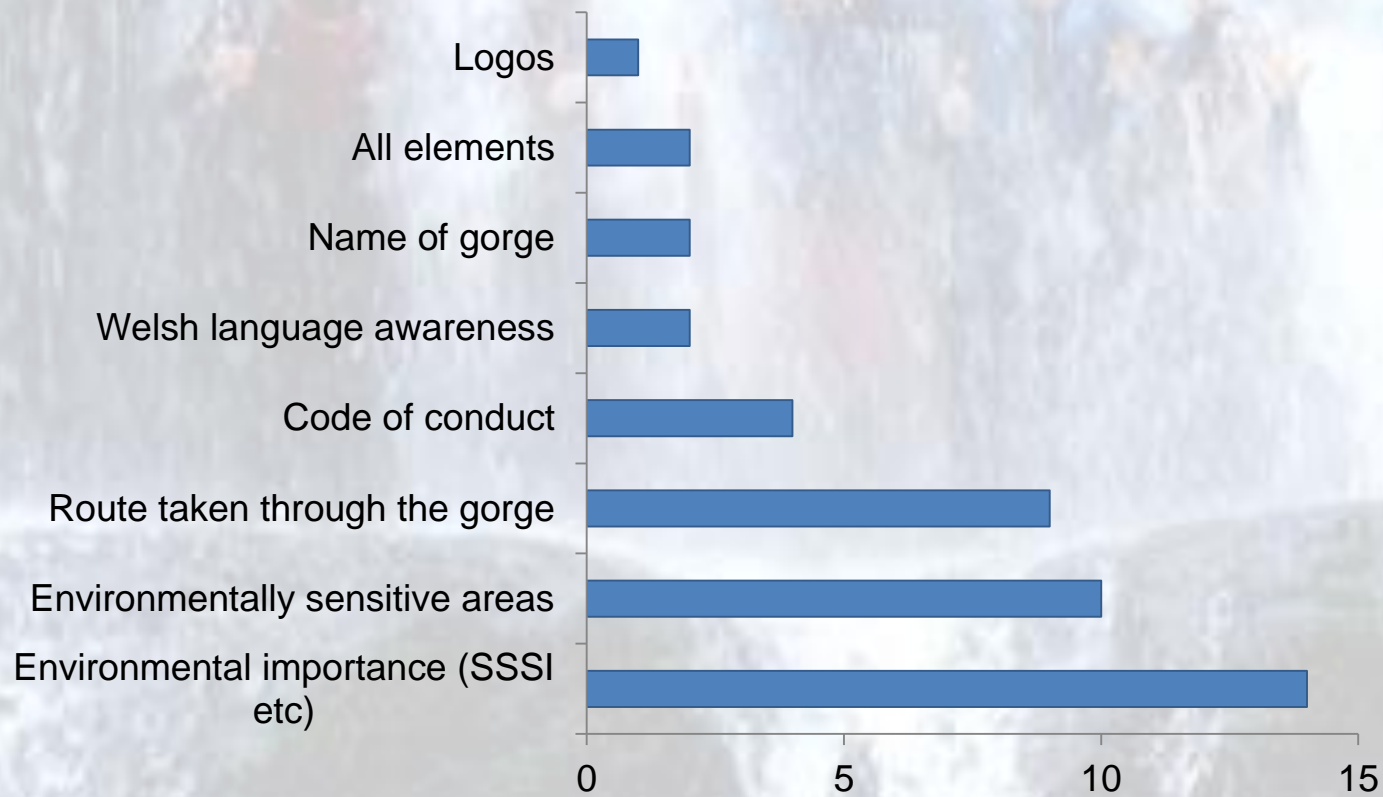
- Arhoswch o fewn y cwrw dŵr neu cadwch at y llwybrau sydd wedi sefydlu'n barod
- Cofiwch osgoi'r holl gerrig a'r creigiau mwsoglyd ymhobman, gan gynnwys o fewn yr afon.
- Cymerwch ofal ychwanegol o gwmpas lleoedd sydd wedi'u marcio mewn ar y map.
- Peidiwch â dringo wynebâu creigiog ar ochr y ceunant.
- Peidiwch â chreu llwybrau newydd
- Grwpiau – pan fyddwch yn ymgynnull, gwnewch hynny ar lecynnau moel a chaled, neu ar raeau.
- Byddwch yn ofalus wrth osod y rhaffau rhag ofn i chi niweidio cennau neu fwsoglau sydd yn tyfu ar goed.

While in the gorge, help to prevent damage to these special plants by following these simple points:

- Remain within the watercourse or keep to established routes
- Try and avoid contact with all moss covered surfaces, even in the river
- Take extra care around the areas coloured in on the map
- Avoid climbing on the vertical rock faces at the side of the gorge
- Don't break new trails
- Groups – please congregate only on hard bare surfaces or on shingle
- Set up rigging carefully to avoid damaging lichens or mosses on trees



Gorge Walking



So... why codes of conduct?

Agreeing what 'responsible' means in the context of an issue sets the foundation of any further work

It brings partners with opposing interests together to agree a common message

They create an identity that can be used to formulate projects and access funding

However, codes of conduct always need to be part of a wider series of interventions



Diolch