

Jon Wayte National Parks Safety Officer



visitor safety

in the countryside group



Essential Risk Management for Everyone

What are the key things we must all be aware of and what are the things we must do ?



Risk Assessment

- Identify what could hurt/harm someone
- Consider what controls this risk at present
- Decide whether more should be done

		Potential severity of harm		
		Slightly Harmful 1	Harmful 2	Extremely Harmful 3
Likelihood of harm occurring	Highly unlikely 1	Trivial 1	Tolerable 2	Moderate 3
	Unlikely 2	Tolerable 2	Moderate 4	Substantial 6
	Likely 3	Moderate 3	Substantial 6	Intolerable 9

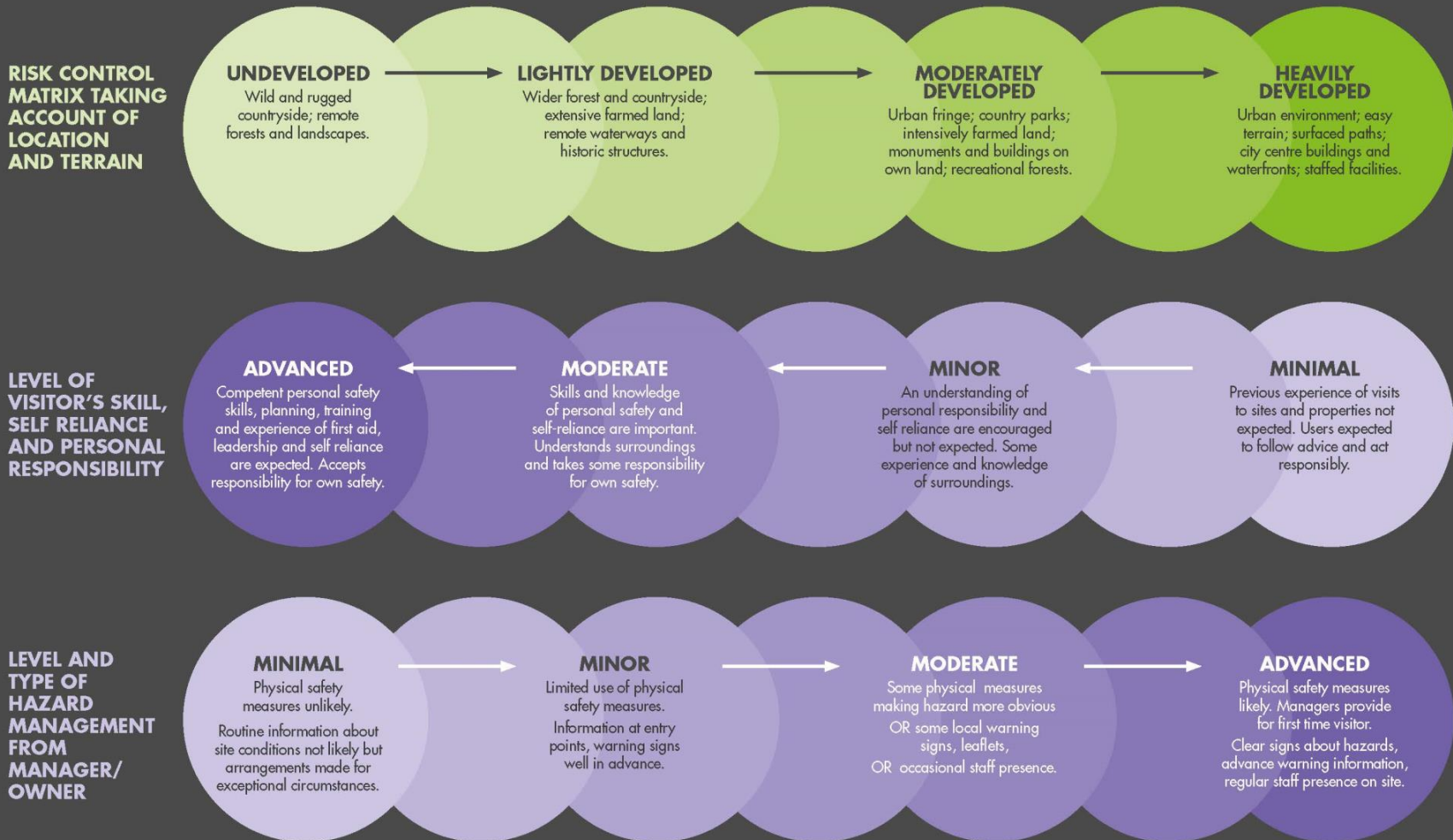
Risk Assessment

- Identify what could hurt/harm someone
 - Hazards and risks
 - Experience, specialist knowledge/advice
- Consider what controls this risk at present
 - Systems and procedures
 - Information, training and supervision
- Decide whether more should be done
 - Incidents and near-misses
 - What others/other places do

Risk Assessment

- Identify what could hurt/harm someone
 1. Steep steps and slopes
 2. Very hot water
 3. Ticks (lyme disease)
- Consider what controls this risk at present
 1. Warning notices, good lighting, cleaning
 2. Notices
 3. Information leaflet
- Decide whether more should be done
 1. Redesign, handrail, surface
 2. Blend hot & cold water
 3. Update/highlight information

RISK CONTROL MATRIX



RISK CONTROL MATRIX

RISK CONTROL MATRIX TAKING ACCOUNT OF LOCATION AND TERRAIN

LEVEL OF VISITOR'S SKILL, SELF RELIANCE AND PERSONAL RESPONSIBILITY

LEVEL AND TYPE OF HAZARD MANAGEMENT FROM MANAGER/ OWNER



HEAVILY DEVELOPED

Urban environment; easy terrain; surfaced paths; city centre buildings and waterfronts; staffed facilities.

MINIMAL

Previous experience of visits to sites and properties not expected. Users expected to follow advice and act responsibly.

ADVANCED

Physical safety measures likely. Managers provide for first time visitor. Clear signs about hazards, advance warning information, regular staff presence on site.

RISK CONTROL MATRIX

RISK CONTROL MATRIX TAKING ACCOUNT OF LOCATION AND TERRAIN

UNDEVELOPED

Wild and rugged countryside; remote forests and landscapes.

LEVEL OF VISITOR'S SKILL, SELF RELIANCE AND PERSONAL RESPONSIBILITY

ADVANCED

Competent personal safety skills, planning, training and experience of first aid, leadership and self reliance are expected. Accepts responsibility for own safety.

LEVEL AND TYPE OF HAZARD MANAGEMENT FROM MANAGER/ OWNER

MINIMAL

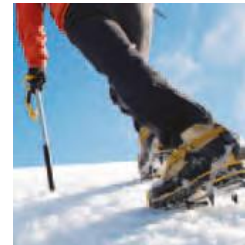
Physical safety measures unlikely. Routine information about site conditions not likely but arrangements made for exceptional circumstances.





MANAGING VISITOR SAFETY IN THE COUNTRYSIDE

principles & practice



www.vscg.co.uk

visitor safety
in the countryside group

